



CARNAHAN · PROCTOR · CROSS, INC.

CONSULTING ENGINEERS · SURVEYORS · PLANNERS

6101 WEST ATLANTIC BOULEVARD, MARGATE, FLORIDA 33063
PHONE: 954-972-3959 FAX: 954-972-4178

JUNE 2005

030715

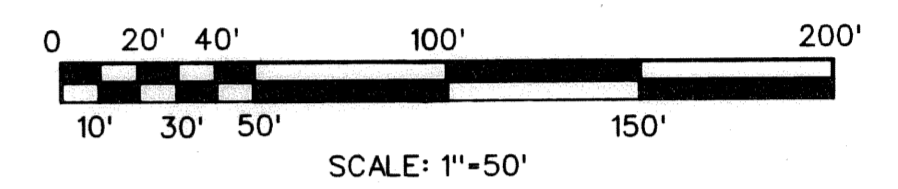
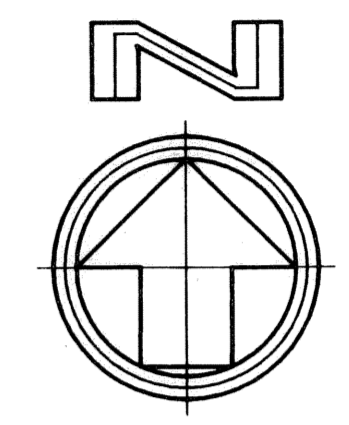
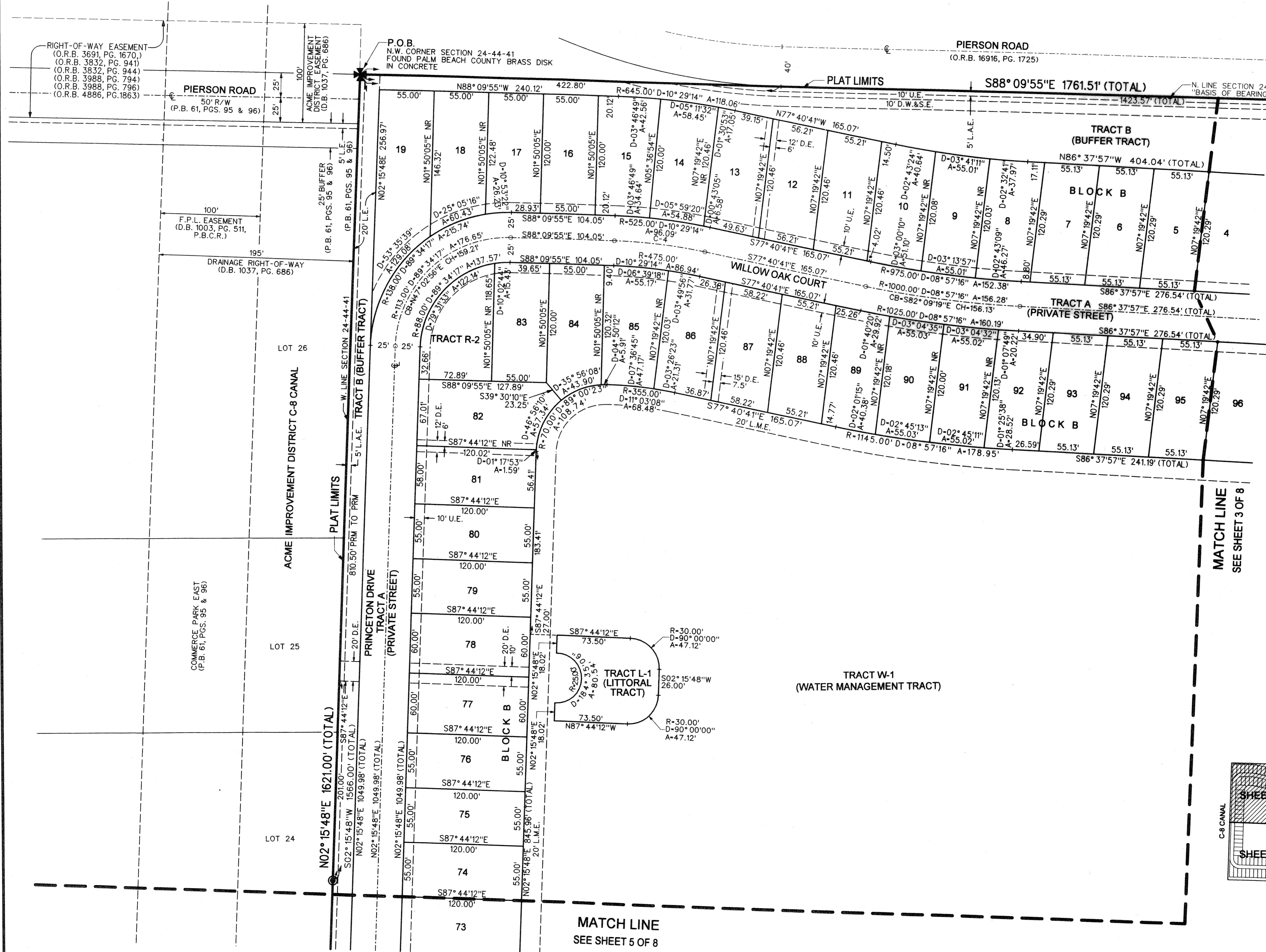
DCW

OAKMONT ESTATES P.U.D.

A PORTION OF THE NORTH ONE-HALF OF SECTION 24, TOWNSHIP 44 SOUTH, RANGE 41 EAST, INCLUDING A REPLAT OF A PORTION OF TRACTS 5 THROUGH 8 INCLUSIVE IN BLOCK 26, "PALM BEACH FARMS COMPANY PLAT NO. 3", AS RECORDED IN PLAT BOOK 2, PAGE 45, OF THE PUBLIC RECORDS OF PALM BEACH COUNTY, FLORIDA, LYING IN SECTION 24, TOWNSHIP 44 SOUTH, RANGE 41 EAST, VILLAGE OF WELLINGTON, PALM BEACH COUNTY, FLORIDA

3

SHEET 2 OF 8



ABBREVIATIONS

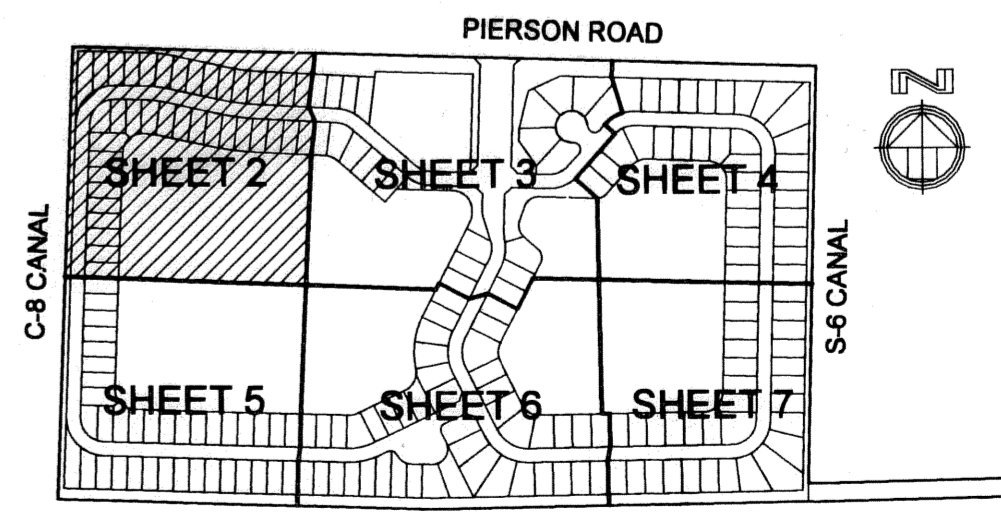
- A - ARC LENGTH
- B.E. - BUFFER EASEMENT
- CH - CHORD
- CB - CHORD BEARING
- DA - DELTA (CENTRAL ANGLE)
- D.B. - DEED BOOK
- D.E. - DRAINAGE EASEMENT
- D.W.S.E. - DRAINAGE, WATER & SEWER EASEMENT
- F.P.L. - FLORIDA POWER & LIGHT CO.
- L.A.E. - LIMITED ACCESS EASEMENT
- L.L.E. - LANDSCAPE EASEMENT
- L.M.A.E. - LAKE MAINTENANCE ACCESS EASEMENT
- L.M.E. - LAKE MAINTENANCE EASEMENT
- L.S.A.E. - LAKE WORTH ACCESS EASEMENT
- L.W.D.D. - LAKE WORTH DRAINAGE DISTRICT
- NR - NON RADIAL
- O.R.B. - OFFICIAL RECORDS BOOK
- P.B. - PLAT BOOK
- P.B.C.R. - PALM BEACH COUNTY RECORDS
- PG. - PAGE (S)
- P.U.D. - PLANNED UNIT DEVELOPMENT
- R - RADIUS
- R/W - RIGHT-OF-WAY
- S.E. - SEWER EASEMENT
- U.E. - UTILITY EASEMENT
- W.S.E. - WATER & SEWER EASEMENT

LEGEND

- ⊙ CENTERLINE
- PERMANENT CONTROL POINT
- ⊙ PERMANENT REFERENCE MONUMENT
SET 4" DIAMETER CONCRETE MONUMENT
W/ DISC STAMPED P.R.M. LB2936

CURVE DATA

	RADIUS	CENTRAL ANGLE	ARC LENGTH	CHORD BEARING	CHORD LENGTH
C-4	R-500.00'	D-10° 29' 14"	A-91.52'	CB-S82° 55' 18" E	CH-91.39'



KEY MAP
NOT TO SCALE

FILE: s:\030715\scad\030715sp2.dgn
DATE: 26-Jun-05 10:07

U.S. 441 (S.R. 7)